

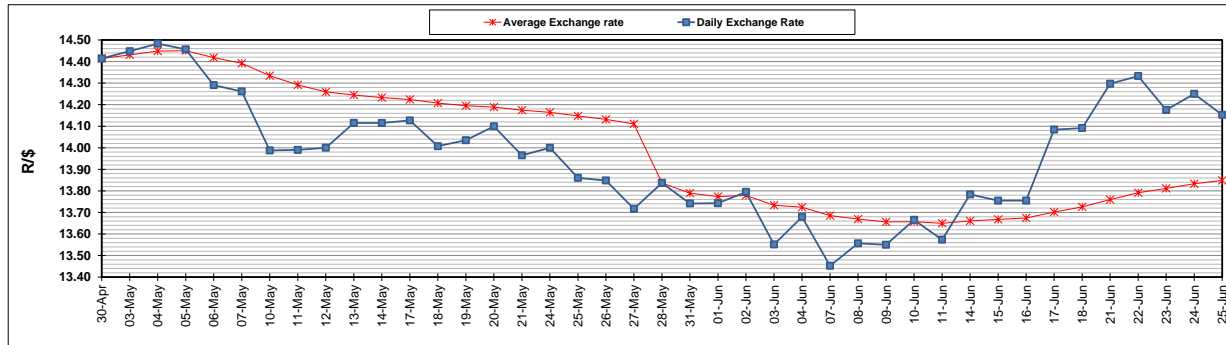
	PETROL 95 ULP	PETROL 93 ULP & LRP	DIESEL 0.05%	DIESEL 0.005%	ILL. PAR.
GAUTENG PUMP PRICE (SA c/l) AS FROM 02/06/2021	1,713.000	1,691.000	-	-	-
WHOLESALE PRICE (SA c/l) AS FROM 02/06/2021	-	-	1,466.620	1,471.020	877.488
SINGLE NATIONAL MAXIMUM RETAIL PRICE	-	-	-	-	1,102.000
BASIC FUEL PRICE - 25/06/2021 (SA c/l)	789.588	779.475	749.708	753.275	727.931
PRESS RELEASE CONTRIBUTION TO BFP 02/06/2021 - 25/06/2021 (SA c/l)	717.170	705.170	679.630	684.030	664.128
UNIT OVER/(UNDER) RECOVERY - 25/06/2021 (SA c/l)	(72.418)	(74.305)	(70.078)	(69.245)	(63.803)
AVERAGE BASIC FUEL PRICE 28/05/2021 - 25/06/2021	735.466	726.981	713.513	717.040	692.015
AVERAGE UNIT OVER/(UNDER) RECOVERY 28/05/2021 - 25/06/2021	(16.867)	(20.382)	(36.740)	(36.010)	(30.744)

ANALYSIS MOVEMENT OF AVERAGE OVER/(UNDER) RECOVERY

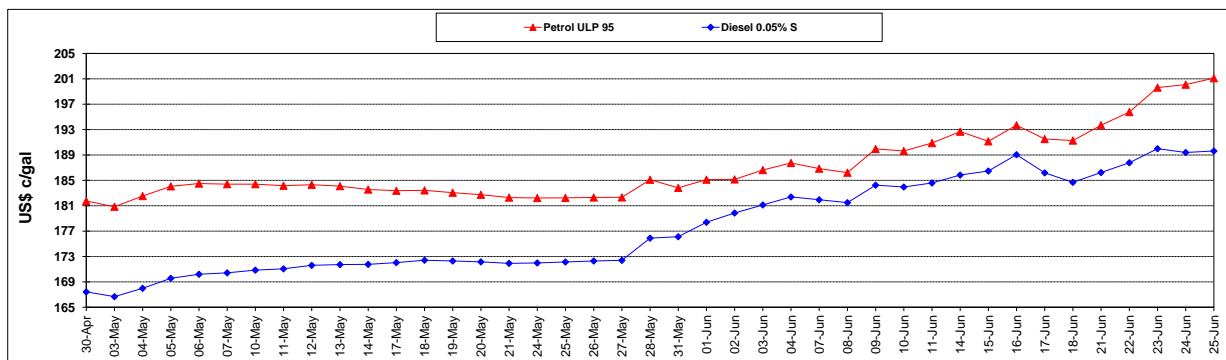
	PETROL 95	PETROL 93	DIESEL 0.05%	DIESEL 0.005%	ILL. PAR.
- MOVEMENT IN INTERNATIONAL PRODUCT PRICES	(30.802)	(34.157)	(50.259)	(49.596)	(43.856)
- MOVEMENT IN EXCHANGE RATE	13.935	13.775	13.519	13.586	13.112
AVERAGE UNIT OVER/(UNDER) RECOVERY 28/05/2021 - 25/06/2021	(16.867)	(20.382)	(36.740)	(36.010)	(30.744)

R/\$ EXCHANGE RATE - (R/\$14.1525- 25/06/2021)

EXCHANGE RATE USED IN BASIC FUEL PRICE



INTERNATIONAL PRODUCT PRICES OF BASKET USED IN BASIC FUEL PRICE



BASIC FUEL PRICE IN SA CENTS PER LITRE

